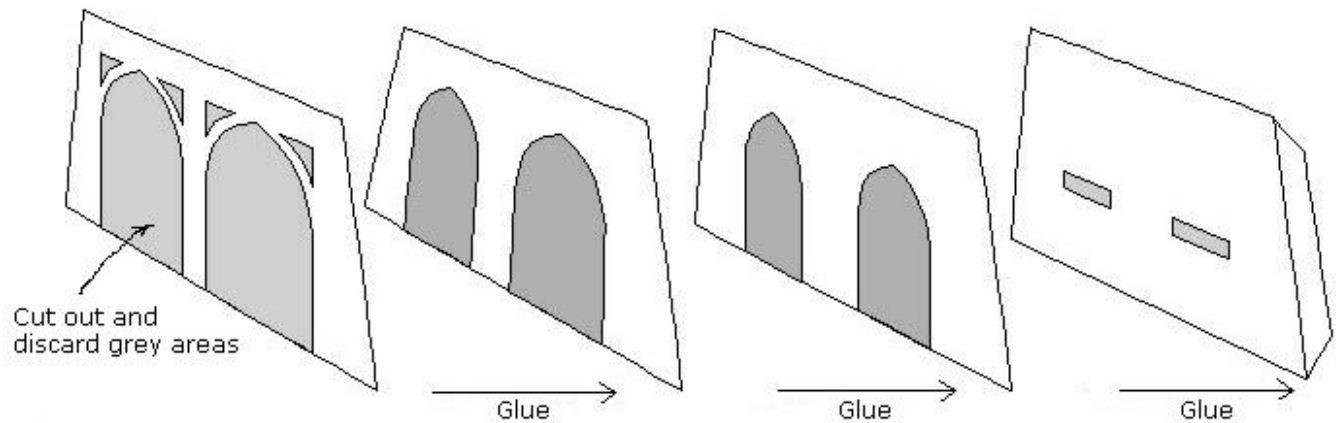


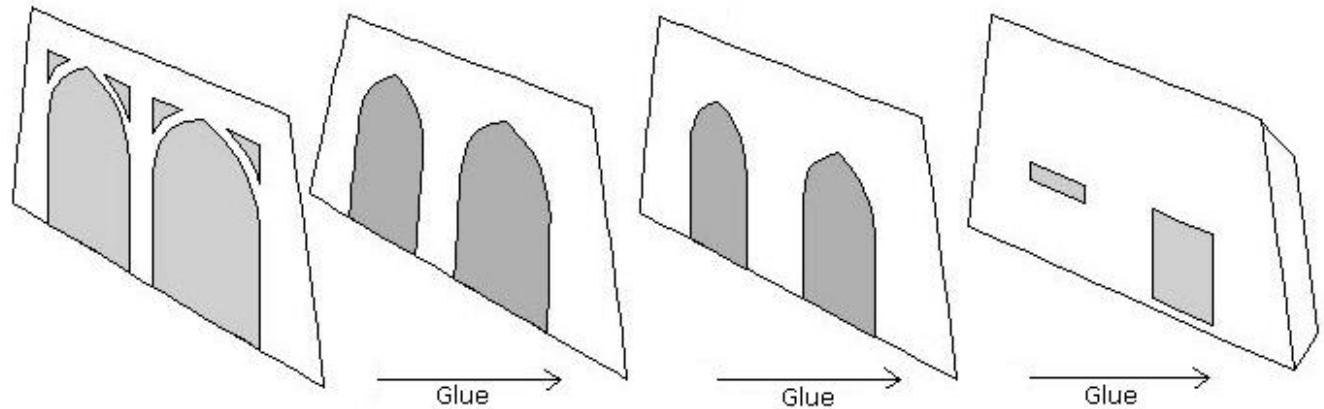
INSTRUCTIONS:

Preparation: Cut out the templates and transfer them onto your card stock. (Cereal boxes are perfect for this.)

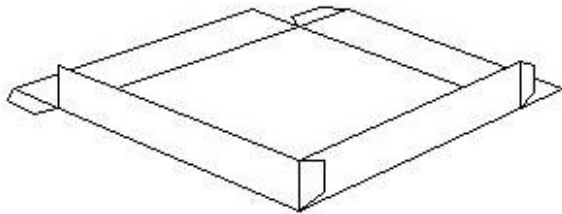
STEP 1A: Construct three of the type 1A wall sections.



STEP 1B: Construct one of the type 1B wall sections.

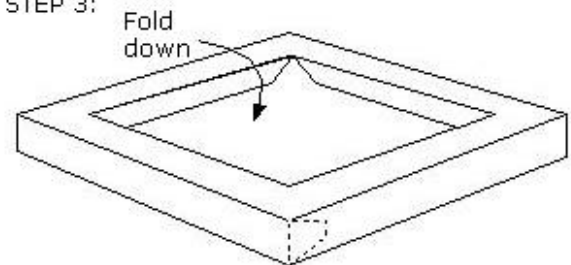


STEP 2:



Cut out the Lower roof section and fold the edges up. Glue the end tabs to the outside of the edge.

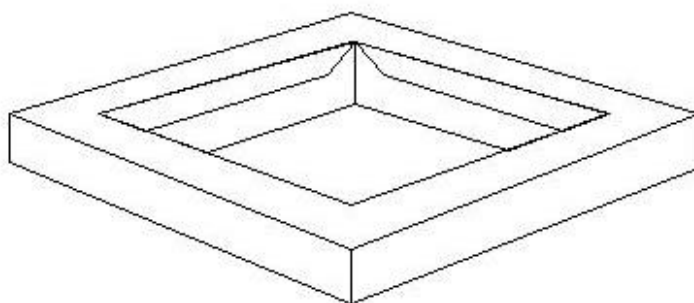
STEP 3:



Cut out the Upper roof section and fold the inner and outer edges down.

Glue the end tabs to the inside of the outer edge so that they do not show.

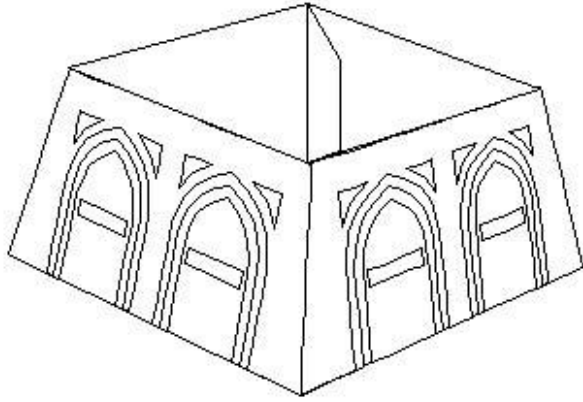
STEP 4:



Place the Upper roof section (from step 3) on top of the Lower roof section (from step 2).

Glue the inner edges of the Upper roof section to the edges of the Lower section.

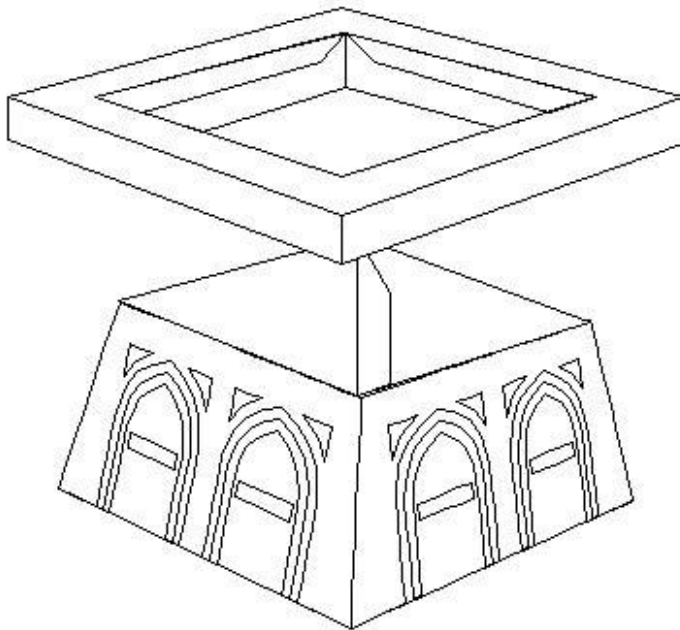
STEP 5:



Glue the three 1A walls and one 1B wall together to form the basic outer structure of the bunker.

Be sure to glue the end tabs to the inside of the joining wall section so that they are not visible from the outside.

STEP 6:

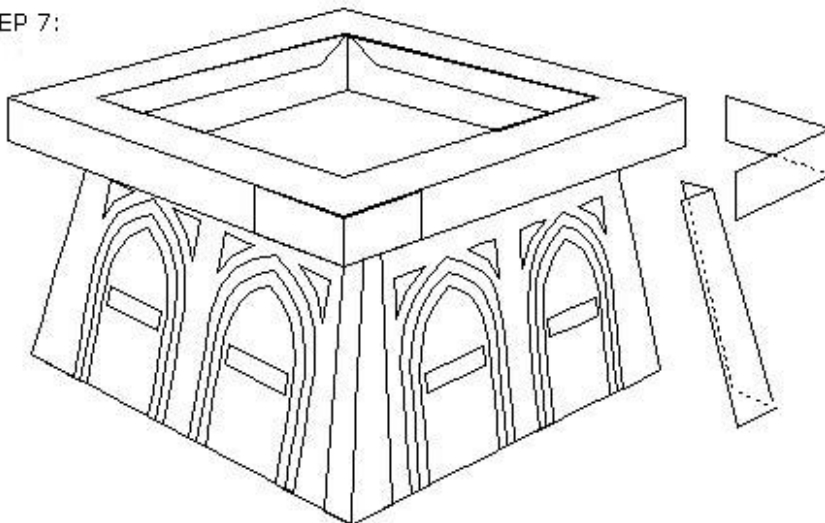


You can glue the roof section to the base section

- OR -

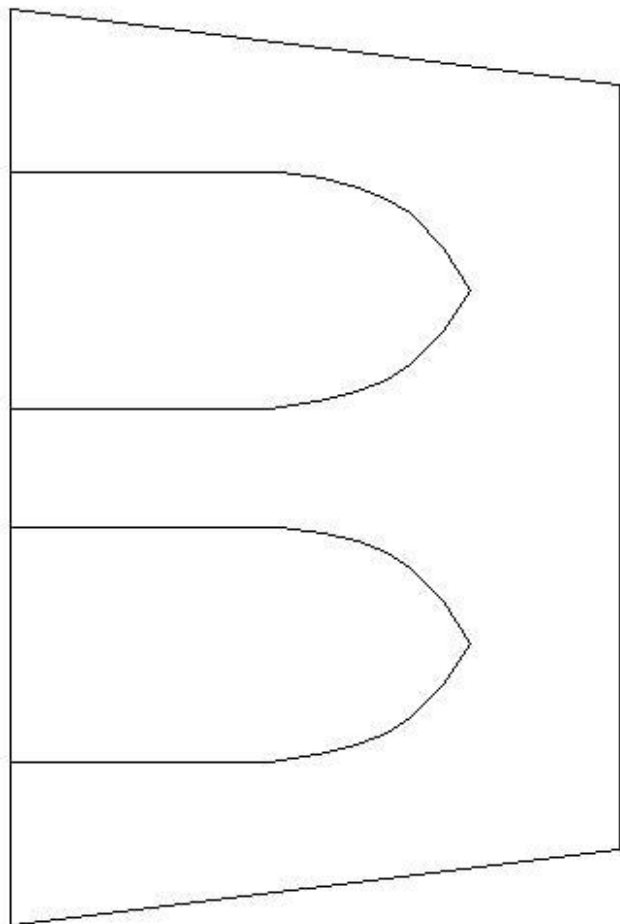
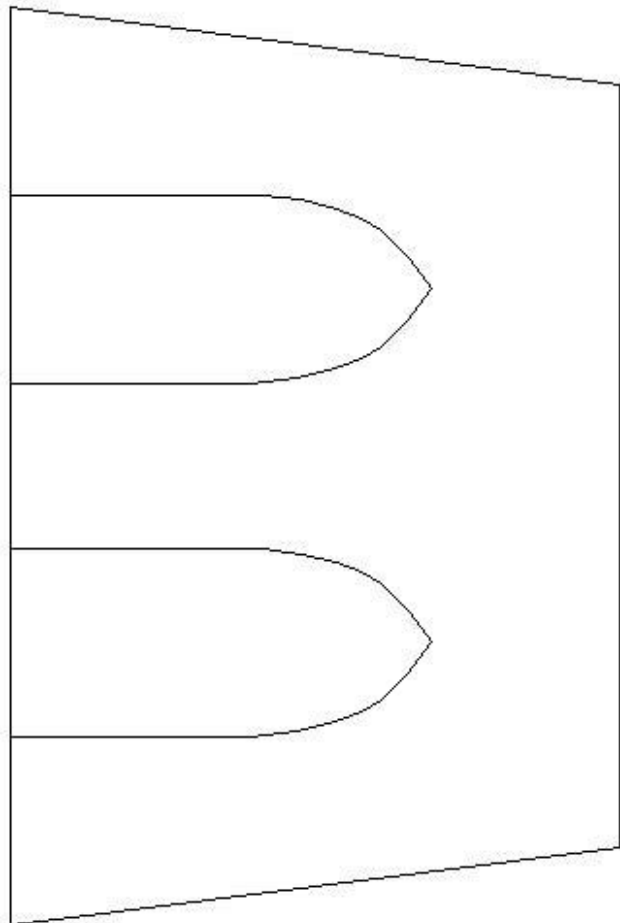
You can simply place the roof on top of the bunker so it can be removed during gameplay to access models placed inside.

STEP 7:



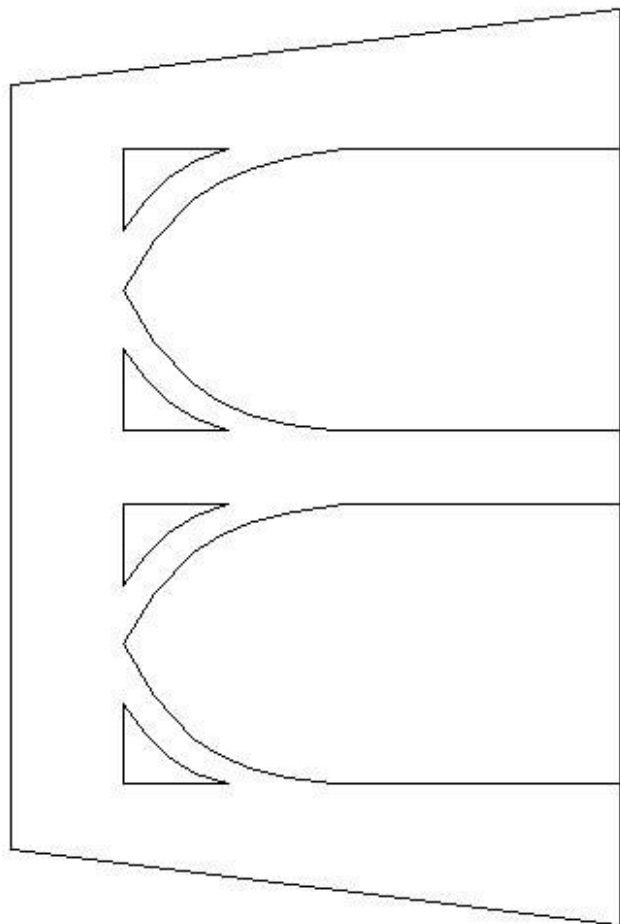
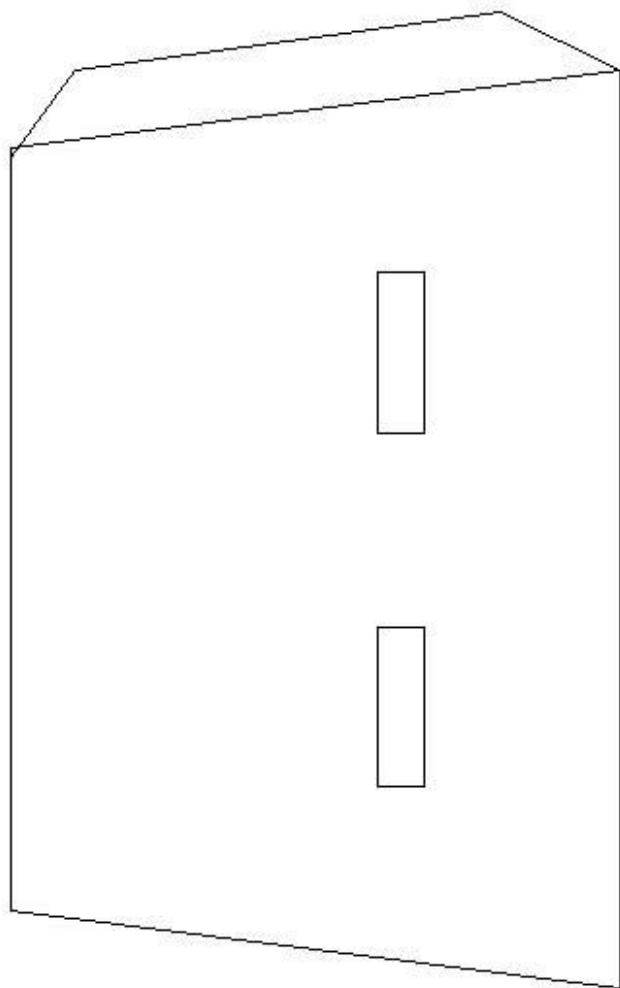
Glue the wall and roof reinforcements into place.



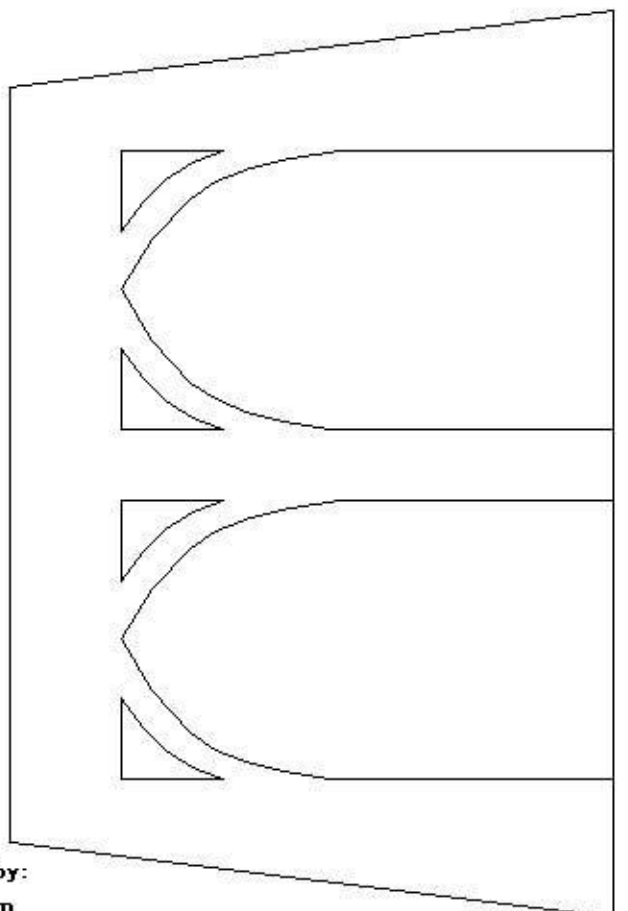
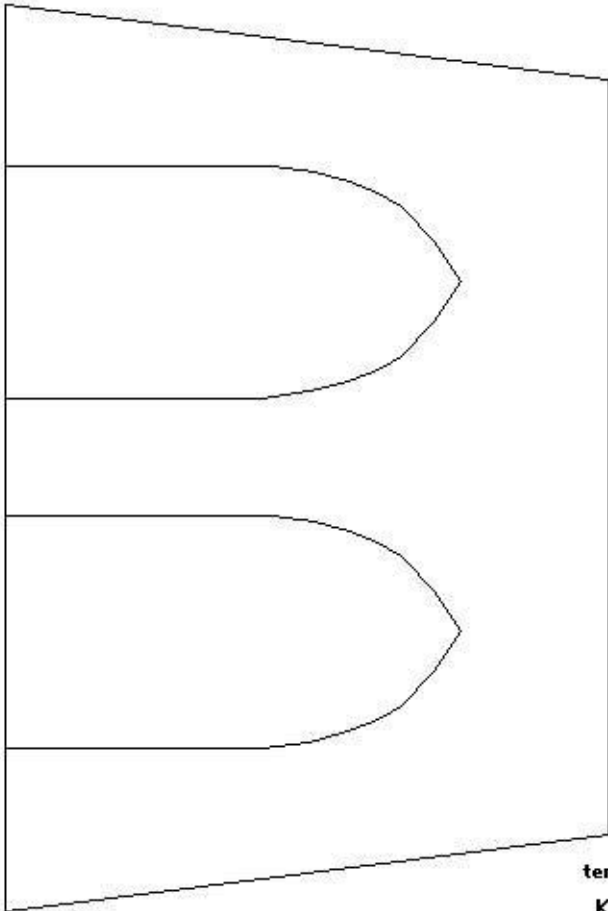
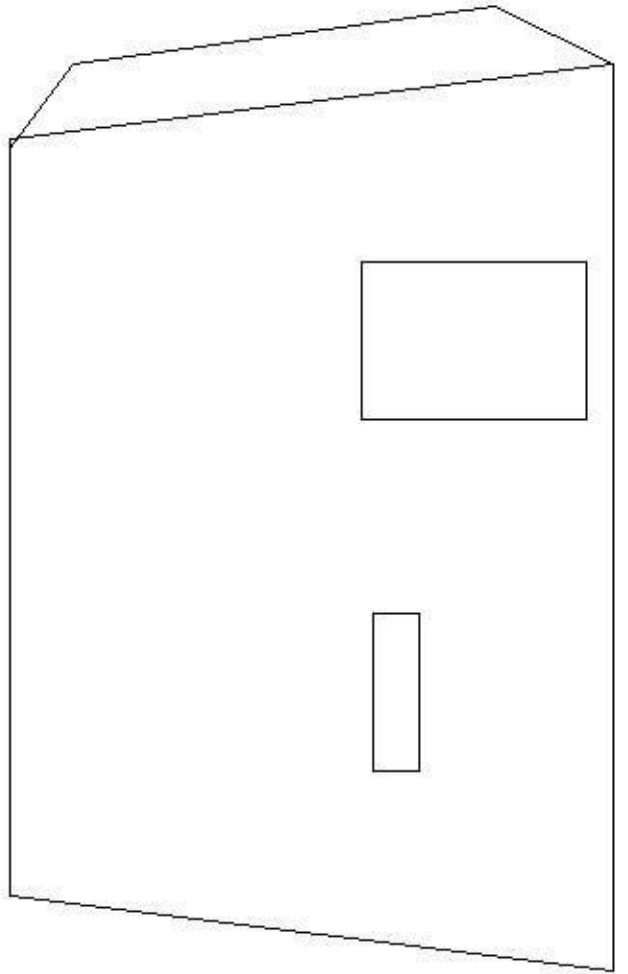
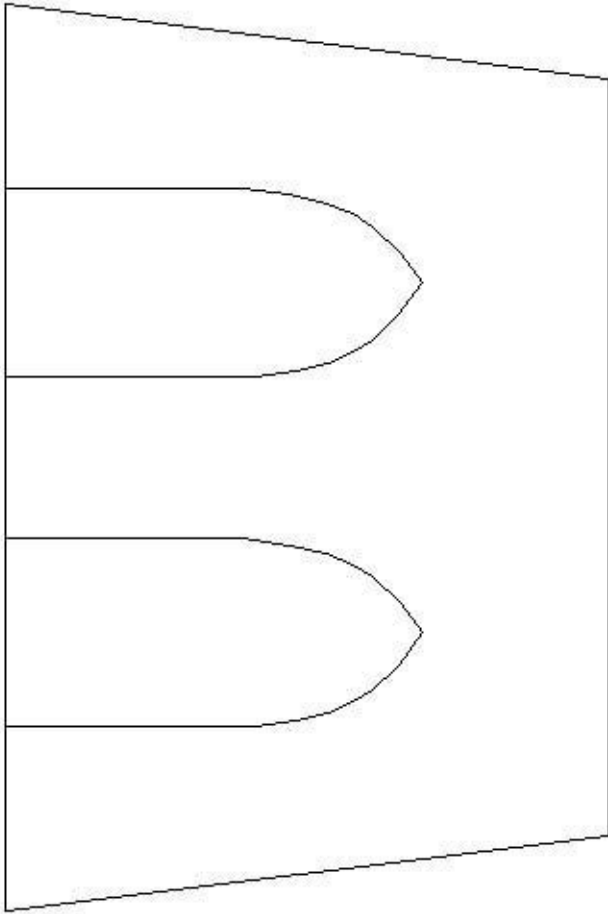


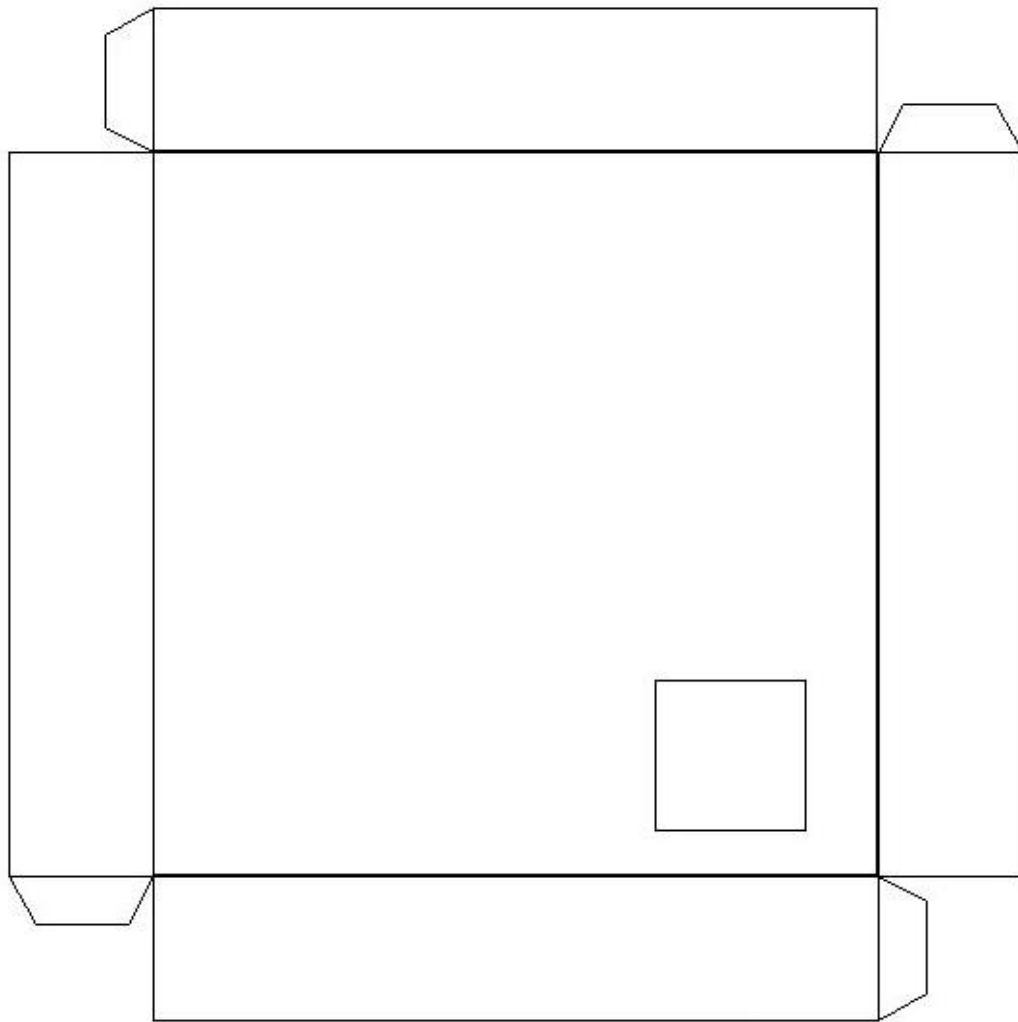
1A)

You will construct three each of this type wall

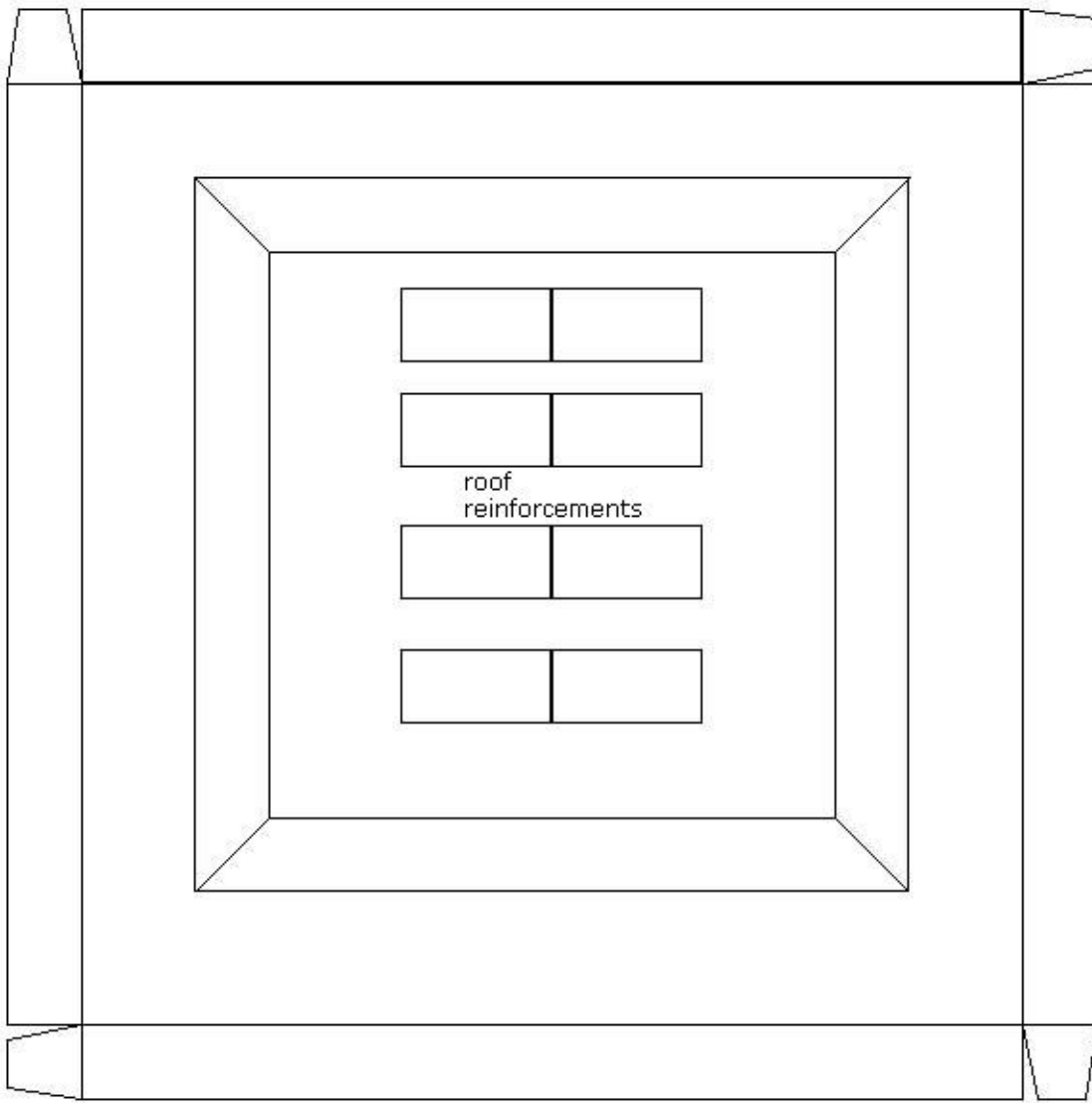


1B)





Lower roof section



Upper roof section

wall
reinforcements

